

# Fixing Sockets Schroeder System

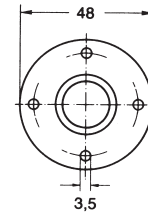
with crimped end  
and nailing plate



List  
**13**

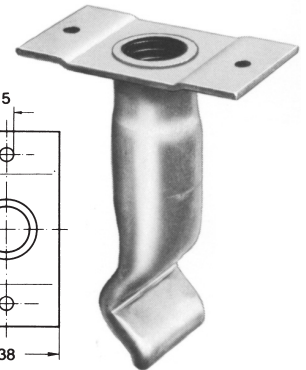
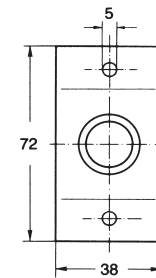
d x L	Reference No.	Dimensions [mm]		Version of the Nailing Plate	Approx. weight per 100 pieces [kg]	Permissible load with 4-fold/5-fold safety factor [1 kg = 10 N, 1000 kg = 1 t = 10 kN]			
		g	s			axial	inclined pull		
		mild steel (bk) electro plated (zn)				0°	up to 30°	up to 45°	up to 90°
M 6 x 40	<b>k1310bk/zn</b>	6	20	A	2.70	150	110	80	50
M 8 x 60	<b>k1317bk/zn</b>	8	35	A	3.75	240	190	130	80
M 10 x 60	<b>k1327bk/zn</b>	10	35	A	4.25	330	260	160	100
M 10 x 100	<b>k1329bk/zn</b>	10	75	A	5.70	350	280	190	110
M 10 x 60	<b>k1335bk/zn</b>	10	32	A	5.25	450	400	350	250
M 12 x 60	<b>k1340bk/zn</b>	12	28	A	5.05	400	300	220	140
M 12 x 100	<b>k1342bk/zn</b>	12	68	A	7.22	440	330	240	160
M 12 x 70	<b>k1351bk/zn</b>	12	40	A	7.15	600	450	400	300
M 16 x 60	<b>k1359bk/zn</b>	15	20	A	9.07	650	500	450	350
M 16 x 70	<b>k1360bk/zn</b>	15	25	A	10.55	800	650	600	400
M 16 x 80	<b>k1361bk/zn</b>	15	35	A	13.10	850	700	600	430
M 16 x 100	<b>k1362bk/zn</b>	15	55	A	15.40	1000	800	700	500
M 20 x 90	<b>k1370bk/zn</b>	18	25	B 1	20.69	1100	900	800	600
M 20 x 100	<b>k1371bk/zn</b>	18	45	B 1	22.62	1300	1000	950	650
M 24 x 105	<b>k1380bk/zn</b>	21	40	B 1	30.17	1600	1300	1100	800
M 27 x 130	<b>k1385bk/zn</b>	22	50	B 2	49.70	2200	1800	1500	1100
M 30 x 150	<b>k1387bk/zn</b>	23	75	B 2	78.45	3000	2400	2100	1500

## Welded nailing plate



Version A  
Plate thickness 1.2 mm

## Welded nailing plate



Version B 1 72 x 38  
Version B 2 100 x 46  
Plate thickness 2.5 mm

The nailing plate allows an easy attachment of the sockets to wood formwork.

Permissible loads have been determined by way of pull-out tests in axial, inclined, and transverse direction from C 20/25 (B 25) unreinforced concrete. A 4-fold/5-fold safety factor is allowed for in the above figures.

**On your request our fixing sockets come with 4 to 6 µm electro plating plus yellow cromate coating.**

Special designs on request